



In this issue:

From the CLaSH Chairman • The final edition • The last months

From the Chairman of the Board of CLaSH

Dear Members of CLaSH,

After almost 32 years with CLaSH, Heide is about to open a new chapter of her life. She will start her well-deserved retirement.

And so the time has come for CLaSH to also start a new chapter. As from 1 January 2022 the organisation will be converted to the CLaSH Trust. CLaSH will then no longer be an active service provider but the emphasis will be put on supporting projects, in particular assisting the Early Intervention Centre.

As we could not find a suitable replacement to step into the big shoes of Heide, the Board had no other alternative than to go this route. We sincerely hope that with the registration of the Trust we have found a way to ensure that children with hearing loss and their families are still given as much support as possible, even though the Government is only able to provide for the minimum.

May I use this opportunity to thank Heide for her unconditional support to the Deaf community over the past 32 years. She put CLaSH on the map and made it a reputable organisation that has been recognised by our Government as a serious partner. It was an honour for the Board to assist her achieving her vision.

Thank you to all Board and staff members of CLaSH and all the donors inside and outside Namibia for their loyal support over all these years.

Dear members, without you CLaSH would not have been able to serve the community the way it did over the past 32 years. Without support from you and the various stakeholders, CLaSH could not have spent the hundreds of thousands of Namibian Dollars for specialised equipment, tailor-made training, educational materials and continuous professional development to identify, assist and promote these needy children.

Countless success stories confirm that our love, all the efforts made and all the time spent were not in vain.

Heide, enjoy your retirement and thank you for what you did for CLaSH and the whole Deaf community in Namibia.

On behalf of the CLaSH Board,
Wolfgang Keding



At the Annual General Meeting 2019 we commemorated 30 years of CLaSH and recognised with gratitude the long-standing members of the Board:

Mathilde Kooper, Ndafu Amadhila-Heita, Sigoopeni Klemens, Treasurer Johann Robberts, Chairman Wolfgang Keding and Vice Chairman Webster Gonzo (inserted: Sem Shikongo and Marc Biederlack)

CLaSH • P.O.Box 24361 • 80, Dr Frans Indongo Street • Windhoek • Namibia
Tel: +264-61-232704 • Fax: +264-61-233904 • E-mail: office@clash-namibia.org
Website: www.clash-namibia.org



From the Director's Desk

This is it! The last and final edition of the CLaSH newsletter. As the clouds are building up outside and everyone is enduring the heat and humidity in the hope of coming rains we are preparing to close the book on CLaSH, the Association for Children with Language, Speech and Hearing Impairments of Namibia.

Looking back, perhaps a little wistfully but mainly full of gratitude, we are reflecting on the children, whose lives we touched, on the issues that we tackled, the projects we completed... We remember the pioneers of the first hour, the indomitable spirit of our volunteers, the dedication of our amazing staff and Board members, the longevity of support from so many donors and supporters... We looked at all the publications - informative, multi-lingual and beautiful. We listened to the early audio tapes, watched the recordings of the annual seminars and the various films on video and DVD. Such a history! Such a lot of wonderful memories! We feel blessed that we were given this opportunity to make a difference.



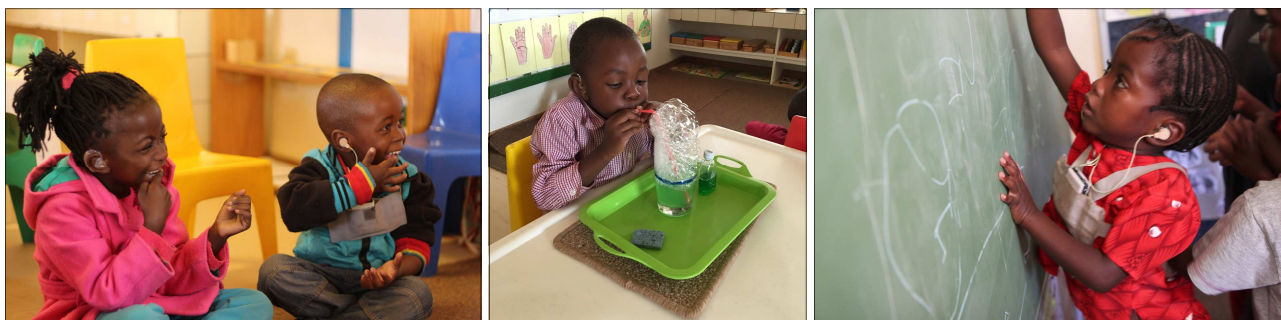
The chronicles of CLaSH have not been completed - despite the extremely hard work of the last 3 months. This is now something to look forward to in the year to come.

As Chairman Wolfgang said, the new chapter on CLaSH will be about the Trust. We have equipped one of the rooms at our old office to host the documents, do admin, PR and bookkeeping and yes - we will continue sending you newsletters, albeit in a different format.

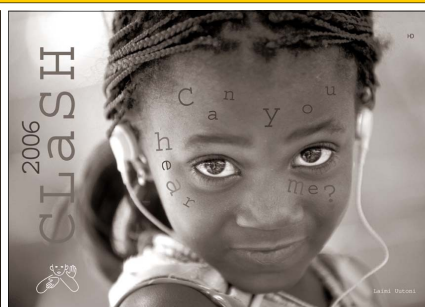
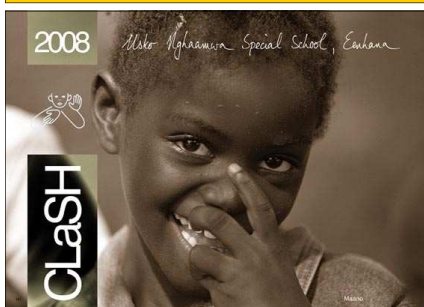
E-mail address and telephone numbers remain the same, so you can continue to reach us. I do not foresee a sudden and complete retirement but intend to work part-time for the Trust. I also hope to share some of my experiences and expertise with the Early Intervention Centre and - I still want to write up the history of CLaSH.

Thank you for reading my literary effusions over the past few years, stay happy and healthy, enjoy a peaceful Christmas and an enriching New Year, and - if at all possible - please continue your support!

Yours with deepest gratitude,
Heide Beinbauer.



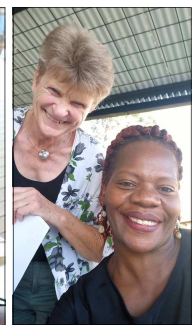
Some of the photos from previous years have become my all-time favourites. There are many more that I could have selected to brighten up this page. Look at the joy, concentration and happiness in the faces of these children, who, for a certain time in their lives, have been "our" children... and be inspired!



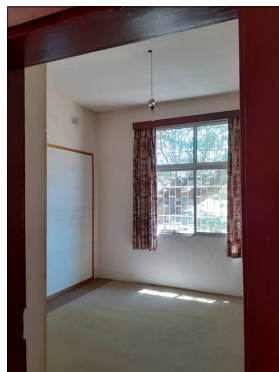
The last month(s)



The preparations for Christmas and the final event of the year at the Early Intervention Centre took most of the time during the last 3 weeks of the school year. Together with their teachers, the children created stage settings and decorations, baked, made thank you cards for their supporters and little gifts for their parents. They practiced their play about the magic tree and performed it very well, despite the last minute change of venue, due to storm and rain.



CLaSH Board and staff and spouses enjoyed a nice Christmas dinner at "Droombos", a popular place, slightly out of town. A wonderful surprise was the quick appearance of "Tate Sem", who had actually relocated to Canada, then came for a quick business trip to Namibia and got stuck because of the latest variant of the Corona virus. Following the Chairman's farewell address, Sem shared some of his memories on the CLaSH Board, on which he had served since 2000. (Unfortunately most of my photos turned out blurred and I had to rely on Antoinette's "selfies". Apologies for missing Ndafu.)



And finally - we almost managed to empty all but

one room of the previous CLaSH office. I still have 3 more days to clean out the last items but one does not see the pile of boxes that is still waiting for me in the New Year. I will be grateful if I do not have to ask the new tenant for some storage space in one of the big cupboards.

As I drove into my parking space this morning, the first lily had started to bloom. These lilies have brought us pleasure for many years but they stopped flowering when we had the years of drought. I take it as a promising sign for the future...!

THE END.

Donors, supporters and friends - thank



Anne Gackstatter Stiftung 



EAR INSTITUTE
for excellent hearing

International Women's Association Namibia

the ELMA philanthropies

EIN HERZ FÜR KINDER

Deutsch-Namibische Gesellschaft e.V.



GREG'S MOTOR SPARES
Where every customer counts

KONEXUS
Dolmetsch-Agentur für Gebärdensprache
Cornelia Berge Hänel / Ute Wortmann GbR

manrico SELECT



Ministries of Education, Arts & Culture
Gender Equality, Poverty Eradication and Social Welfare
MGEPESW MoEAC



Oldenburger Gospelchor Voices e.V.

PUPKEWITZ FOUNDATION

PRANA-Stiftung



Red Earth SUNNY TOURS & TRANSFERS

pointBreak

Sea Pride
FOOD SERVICES (PTY) Ltd
Simply the Best!



Stiftung aanto



Rotary

RC München-Lehel



UNPRPD MPTF
Partnership on the Rights of Persons with Disabilities

VULKAN RUINE TOURS & TRANSFERS
Because of you we are here!

Windhoek Hearing Aids
hear the difference

Thank you for all the individual donations!

- | | | | |
|---------------------------------|--|------------------------|-----------------------|
| African Child Action | H Haas and friends | K Möller-Henck | K Vollrodt & family |
| Akustik Kirstein + Ruhl | U and B Hermann | J and D Müller | G Walter |
| J and D Bauer | J Hernadi-Koch | D Münstermann | S Wassung |
| M Beigelbeck | Inner Wheel Club Husum | Dr R Moltrecht | I and G Weitzel |
| H Benzing | K Iqbal Bhatti | W Nass | J Werner |
| C Berding | M Jaegers | O Otto, family&friends | F Weßels & family |
| K Biegert | Dr E.Jensen, family&friends | B Ritz | Prof M Zappen-Thomson |
| D Bock | B Jungbluth | A Schaub | |
| S Bright, friends & family | I Kähler | R Schlage | |
| S and P Buhrow | M Kettelhake | F Schlotterbeck | |
| O Clemen & family | U Klafs | P Schoemann-Finck | |
| C Culotta | U Klenner | M Schulze | |
| O Dollmann-Saitner | I Kolbe | Dr M Thomson | |
| K Ehmert | Dr T Krug von Nidda | L Tissing | |
| A Eismann | Dr G Lehnerdt | B Tjirera | |
| Dr B Fawzy | J Lindner | FJ Trost | |
| W Figge | S Lutz | B Tschamper | |
| Anne Gackstatter Stiftung | Dr S Lutz | R Ubl | |
| German Lutheran Church Windhoek | C and W Maddée | A van Delden | |
| Dr B. Gessert | Prof G Manley | H van Delden | |
| D Gürtler | „Mittwochsfrauen" des Lionsclub Senfkant | Dr J van Tonder | |
| | | S van Zyl | |